

Wkandu



2024 Impact Report

A Message from Ukandu's CEO

Reflecting on Ukandu's historic growth in 2024, I have never been more proud to be a part of this organization or more excited about its future. **This year, we saw record-breaking total enrolment and more new program participants than at any time since the mid-1980s.** Additionally, we welcomed new volunteers, new board members, and new staff.

We were thrilled to finally share our plans for Ukandu's next expansion, The Loft for Families Impacted by Childhood Cancer. Informed by research, we know that this facility, opening in 2026, will provide much-needed services and support to this community. We also know that families can't wait until 2026 for access to specialized mental health services and deserve even more opportunities to connect with others navigating the harrowing childhood cancer journey. That's why, in 2024, we expanded programming to offer engagements in 10 months out of the year, leading to a 20% increase in families served.

This year also marked historic growth in volunteer recruitment. With more volunteers needed than ever to operate our growing suites of programs, Ukandu was fortunate to work with some incredible partners and consultants who helped to develop, shape, and execute a new volunteer development program. Ukandu now provides year-round training opportunities and a comprehensive onboarding process to ensure our volunteers provide the best experience possible to the families we serve.

In closing, I want to call attention to all of you in our community. With your help, we marked our most successful fundraising year ever. We are proud to offer all of our programs 100% free of charge to the families we serve, and we can only do that with your support.

To every member of our Ukandu community, thank you for your support, trust, and dedication. Whether you are a donor, a volunteer, or one of those who choose to share your family with us, we are truly thankful that you are a part of our Ukandu Family.

Jason H. Cho





2024 In Review

2024 was Ukandu's busiest year yet! We grew our team by adding two full-time employees, including Ukandu's first Operations Manager and Program Coordinator. We also added three new board members, strengthening Ukandu's leadership and expanding our philanthropic network.

This additional capacity allowed Ukandu to expand its programmatic offerings to include **16 individual program engagements** serving **610 participants!** To support this increase in programming, 2024 marked the launch of Ukandu's year-round volunteer training program, with 7 training opportunities administered to **150+ annual volunteers.**

Our Mission

To provide hope, joy, and connection to communities impacted by childhood cancer. We recognize that cancer impacts the entire family and aim to provide respite from the physical, emotional, and financial toll childhood cancer poses to families.

Reflections from Ukandu's Program Director



Robin Emerick, Program Director

Ukandu had another exceptional year of sustained growth, relational impact, and outrageous fun. A key addition was hiring Joanna Miu as Ukandu's Program Coordinator. She has brought invaluable personal and professional experience to the programming department, enabling us to reach new goals and have a greater impact on the families and participants in the Ukandu community.

In 2024, Ukandu provided hope, joy, and connection to a total of 610 attendees, marking a 20% increase from 2023. Ukandu Family Camp, now in its third year, hosted 96 campers and had an additional 41 participants on the waitlist. We were also fortunate to have more volunteers than ever serving Ukandu families. While these numbers are encouraging, their true significance lies in the fact that each number represents a member of the Ukandu family. **Ukandu is more than just the sum of its parts; it is the community formed during caregiver support groups, the resilience fostered in teens overcoming their fears on the river, the shared emotions expressed during memory circle, and so much more.**

Ukandu programming shows no signs of slowing down as we look ahead to 2025. From new program offerings, such as the Caregiver Support Group series to our flagship program Camp Ukandu, we are eager to establish an even more authentic community, encourage outrageous fun, and inspire profound hope for families throughout Oregon and SW Washington.



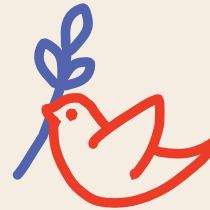
610

program attendees



16

program engagements



28K+

total volunteer hours



150+

total volunteers



Introducing: The Loft

For Families Impacted by Childhood Cancer

Ukandu is thrilled to announce our newest initiative, ***The Loft For Families Impacted by Childhood Cancer***. Coming in 2026, The Loft will be Ukandu’s headquarters and welcoming hub. This 15,000-square-foot space will host Ukandu staff offices, mental health clinical spaces, a caregiver lounge, an active space (including two rock walls!), a family room, a reflection garden, an outdoor fire pit, and so much more. **And like everything Ukandu does, it will be 100% free of charge.**

Located just six minutes from Doernbecher Children’s Hospital and 11 minutes from Randall Children’s Hospital, **The Loft will facilitate hope, joy, community, and connection - all year long.** This expansion means new year-round opportunities will be available to families in addition to the existing Ukandu programs you know and love.

Programming

Permanent office space for staff and volunteers

Drop-in hours six days a week

Support group discussions

- *Families newly diagnosed*
- *Managing parenting, marriage and cancer*
- *“What about ME!?” – a sibling’s cancer journey*
- *Maintaining family after a child dies*
- *Long-term survivorship – adulting after cancer*

Parents’ date night

- *Drop off your kiddos at The Loft for a play date and go do something as a couple!*

Mental health services provided by licensed clinicians

The Loft will be a space to wrap around families with community from the moment of diagnosis, through treatment, and beyond. With unique and intentional programs and spaces for each member of the family, the Loft will help us say, “We got you; we’re here for you.”



THE
LOFT

Introducing: The Loft

For Families Impacted by Childhood Cancer



“I think The Loft is an opportunity to be thought leaders and growth leaders in the medical community and create something that people will look at and say, ‘Oh, that. Every kid should have that. Every family should have that. A hub. A place where they can go to...where they can feel seen and heard and supported.’ We want that.”

Dr Amy King, PhD | Licensed Psychologist



“We need a place within the community that allows families to get together, to feel a sense of community, to be able to relate with one another, and to tell stories of and share stories of what they’ve been through. I think that Ukandu is well-suited to provide this community space because they’ve been doing it for a long time. I think it will be a great place outside of the hospital to help heal.”

Dr. Jason Glover, MD | Pediatric Oncologist



New Look, Same Ukandu

In the Fall of 2024, Ukandu launched our brand-new logo and branding after working closely with Happy Lucky, a Portland-based creative agency. This new look builds upon previous iterations of Ukandu logos to create a new, dynamic look and feel. With a fresh new logo and bold new colors, this new brand says one thing: 'The world is yours, and we'll help you see it!'

Updated logo



“Over the past few years, Ukandu has experienced immense growth, moving from just one annual program to a full suite of year-round programs. With this growth, Ukandu was ready for a new look that highlighted who we are to a new audience. This new logo feels joyful and bright, with the different colors in the primary logo accenting the pronunciation of Ukandu. You’ll also notice a yellow ribbon - the universal symbol of childhood cancer awareness. We hope you love it as much as we do!”

Sage Palmer, Ukandu Communication Director



Recognition for Ukandu Camp Programs

Ukandu is proud to have earned the American Camping Association's accreditation for both Camp Ukandu and, for the first time, Ukandu Family Camp. Camp Ukandu also received the Gold Ribbon Accreditation from the Children Oncology Camping Association - International. These two accreditation systems require programs to meet a number of standards focused on health, safety, and risk management.

Camp Ukandu also received the Cedar Award for Excellence in Camping Award from ACA. This award is given to camps that develop effective, creative responses to the needs of people and/or societal problems using the camp environment.

We are honored to receive these distinctions from ACA and COCA-I and look forward to continuing to meet and exceed the highest standards set for camping programs.



2024 Camp Ukandu Leadership Team



2024 Fundraising Success



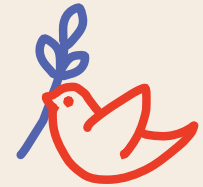
22%

growth in
total income



61%

increase in
individual giving



41%

increase in
corporate giving

“2024 marked Ukandu’s most successful year of fundraising to date. One of Ukandu’s trademarks is that all of our programming is 100% free of charge, making it financially accessible to all families. This is made possible by the incredible generosity of our community. It’s no exaggeration to say that without our donors, our programs would not exist. In 2024, we saw overwhelming support across the board from individuals and families, businesses in the community, social organizations and foundations. On behalf of the Ukandu team, I want to thank each and every one of our supporters for believing in our mission and for choosing to be a part of this critically important work.”

- Johnna Loreen, Ukandu Development Director

2024 Ukandu Financials

As we look toward our future and build The Loft, a significant portion of our 2024 and 2025 budget reflects essential investments in the systems and infrastructures that will support our auspicious programming growth.

Operating Revenue

Corporate Contributions	\$121,124.49
Individual Giving	\$558,803.12
Fundraisers	\$233,089.43
Foundations	\$479,600.00
Other	\$1,333.25
Total Revenue	\$1,393,950.29

Operating Expenses

Programming Expenses	\$510,365.00
Payroll Expenses	\$415,216.00
Administrative Expenses	\$423,751.00
Total Expenses	\$1,349,332.00



Ukandu Partners

Ukandu's year-round programs wouldn't be possible with the support of dozens of community organizations. Whether they give their dollars, time, or other resources each partnership is invaluable and critical to our work. On behalf of the Ukandu staff, board of directors, volunteers, and families we are so thankful for the support we receive from our community.



Gensler



Charter
Mechanical



BORN IN OREGON | MADE IN FRANCE

Gesa Credit Union
Geico Beaverton
CorSource
Froelich Engineers
The Inter Alia Group - RBC Wealth Management
Harold & Arlene Schnitzer CARE Foundation
OnPoint Community Credit Union
Advanced Wealth Management
Alliant Insurance Services
Honeycomb Psychology
ROCO Winery
Threshold Brewing & Blending
Timbers/Thorns
Violin Wines
YMCA Camp Collings
Camp Magruder

Pacific West Bank
Umpqua Bank
Holman Automotive Group Inc.
Barran Liebman LLP
Bill Bailey - RE/MAX
KONE
MK Distinctive Dentistry
Metro Metals Northwest Inc
Ameriprise
Atlas Management
Jupiter NEXT
Geico, Local Office In Beaverton
Triskalee Farms
YMCA Columbia-Willamette
Randall Children's Hospital
Doernbecher Children's Hospital
The Lotus Herd
Funny Farmz

Dr. Amy
Dr. Michael Schwartz
Foresome Golf Cars
Mobile Mini
Synergo
American Camping Association
Children Oncology Camping Association - International
Portland Community College
LEAP
Dragon Slayers
Knight Cancer Institute's Community Partnership Program
Milk Crate Kitchen
Rose Haven
Honeycomb Psychology

Thank You!

On behalf of all of us at Ukandu, we are immensely grateful to the corporate, foundation, and individual donors who make our work possible.



Foundations

\$300,000+

Elizabeth B McGraw Foundation

\$50,000 - \$75,000

OHSU Foundation

\$20,000 - \$49,999

KOA Care Camps
Bill Block Foundation

\$10,000 - \$19,999

Clark Foundation
Robert D. And Marcia H. Randall
Charitable Trust
Mary Dooly and Thomas W.
Holman Fund

\$2,500 - \$9,999

OCF Joseph E. Weston Public
Foundation
The T. F. Dixon Family
Foundation, Inc.
McCrea Foundation
Bland Family Foundation
KLA Foundation

Up to \$2,499

Anonymous
Beusse & Porter Family
Foundation
Pledgeling Foundation Harold
& Arlene Schnitzer CARE
Foundation
Nippon Dynawave Foundation
Regan Stambler Charitable
Fund

Thank You!

On behalf of all of us at Ukandu, we are immensely grateful to the corporate, foundation, and individual donors who make our work possible.

Individual & Corporate Giving

\$20,000+

Jack Martin & Colleen Crowley
Jesse & Kindra Long
Mark & Rebecca Frinell
Nancy Tilford
Phil and Jane Peters
Ray & Bobbi Davis

\$10,000 - \$19,999

Charter Mechanical Contractors
Carole Streeter
Jim Flynn
John & Katie McGraw
Walsh Construction

\$7,500 - \$9,999

Altar'd State
Ed & Emily Harnden
Jenessa Olson
Mark & Nancy McGraw
Mary Magrath
Michael & Chelsea Maloney
Richard Maxwell
Umpqua Bank

\$5,000 - \$7,499

Aliza Scott
Alyson Barnes
Atlas Management
Brian Delplanche
Chris & Colleen Schwab
Cowlitz Tribal Gaming Authority
Dana Rasmussen
Honeycomb Psychology
Lauren Bean
Lisa Kolve
Scott Mears
Tim Terich

\$2,500 - \$4,999

Advanced Wealth Management
Ameriprise Financial
Barran Liebman LLP
Carolee and Gerald Kolve
Chris Brooks
Cindy & Don B Trelstad
CorSource
Eric & Sarah Enders



Thank You!

On behalf of all of us at Ukandu, we are immensely grateful to the corporate, foundation, and individual donors who make our work possible.



\$2,500 - \$4,999 Cont.

Evie Fuson
Geico Beaverton
Holman Automotive Group Inc.
Jill Beidler
Jon Fischer
Metro Metals Northwest
Pacific West Bank
Randy Pickett
Rob & Maureen Grassmyer
The Inter Alia Group - RBC Wealth
Management
Vic Petroff

\$1,500 - \$2,499

Fern Brock
Iraida Hermann
Jeff Sorg & Harlow Spaan
Jill Abere
Kay Yancey
Lynne McGraw
Marcie Walsh
NW Public Affairs
Patrick Ryan
Salesforce
Scott Springer

\$1,500 - \$2,499 Cont.

Tim Leatherman
West Homes
Windermere Foundation

\$1,000 - \$1,499

Alliant Insurance Services
Andrew Hermann
Andrew Lee
Bob Haley
Chocolat-e
Colette Young
Darin Vick
Donna Neerhout
Ellen Mitchener
Froelich Engineers
Gesa Credit Union
GFWC Oregon City Woman's Club
Joy Kim
Junction City Lion's
Katie Johnson
Kelly K Douglas
KONE
Kristen Cowden
Kristi Lebaron
Kristin Scheible

Thank You!

On behalf of all of us at Ukandu, we are immensely grateful to the corporate, foundation, and individual donors who make our work possible.

\$1,000 - \$1,499 Cont.

Lake Oswego Lions Club
Mark Silver
Martha Pyne
Michael Brier
Mike & Judith Holman
MK Dentistry
OnPoint Community Credit Union
Pat Welch
Steve Hunt
Steven & Michaela Lipsey
Ted Haley
Tim Cooper
Vista Capital Partners
Geoff Schroeder

\$500 - \$999

Amy King
Angela Konrad
Angela Sherbo
Ben Rollins
Bill Bailey - RE/MAX
Central Lions Club
Chris Renfro
Christina Bennett
D'Anne & Skip O'Neill

\$500 - \$999 Cont.

Andrea Lauer
Diana Bianco & Anthony Effinger
Donald Aaberg
Erin Hungerford
First Response, Inc.
Fred Buller
Gerald Green
Heather Hungerford
Heather Kientz
Hood River Lions Club
Horizon CME
Howells Consulting
Janet Sahni
Jessica Gibbon
John David Bennett
John Hunter
Kate Rollins
Kathleen Messmer
King City Lion's Club
Kurt Richarz
Larry Van Laningham
Laura Schlafly
Linda "Bozo" Schnitzer
Macy Wall
Michael Schwartz
Michelle Aleman



Thank You!

On behalf of all of us at Ukandu, we are immensely grateful to the corporate, foundation, and individual donors who make our work possible.



\$500 - \$999 Cont.

Penny Church
R.A. Long High School Drama Program
Raymond & Catherine Beard
Robert & Margaret Bernstein
Robert Nunn
Scott Fuson
Tanya & Mike McGee
The Sandpiper Project
TJ Richter
Todd & Debbie Nicholson
Tom Camou

Up to \$500

Aaron Braun
Aaron & Jean Cripps
Aaron Grossman
Adam Mansell
Adam Silverblatt
Adam Sitmann
Alexandra Block
Alexis Harris
Alice Lloyd
Alison Rosenblum
Allyson Schumacher
Alvadore-Franklin Lions Club
Amanda Figueroa
Amanda Harvey

Up to \$500 Cont.

Amy Archer-Masters
Amy Arritola
Amy Boggs
Amy Hill
Ann French
Ann Khawaja
Anna Gonzalez
Anne E McLaughlin
Austin May
Austin Mcglone Banafsheh
Kashani Barnes Ellis
Ben Sias
Ben Ullmann
Benjamin Kleiman Benjamin
Scott Rollins Betsy Stark
Miller
Betty Bickford
Billy Grippo
Brad Grate
Bree Tischleder
Brent Huston
Bret Huston
Brian & Savannah Dombeck
Bridger Dunn
Brittany Andrus

Thank You!

On behalf of all of us at Ukandu, we are immensely grateful to the corporate, foundation, and individual donors who make our work possible.

Up to \$500 Cont.

Brooke Moffenbeier	Deborah R Renee
Bryan Hillman	Dev & Sumathi Devarajan
Cambia Health Solutions (Employee Match)	District 36R Cabinet Lions Club
Cameron Kelley	Donnie & Tina Sixberry
Cameron Steph	Dorothy Brown
Carly Harrison	Doug Chiapuzio
Caroline & Brad Yamazaki Roberts	Douglas McEwing
Carolyn & Joe Brazil	Dr. Albert & Kathryn Maziarz
Catherine Kent	Ed & Carol Woodruff
Cecil Swamidoss	Ed Burke
Chad Campbell	Efrain Lopez
Chelsea Ingram	Elias Bond
Cheri Weaver	Elisa Carrasco
Cheryl Lovre	Elizabeth Miklus
Christa Burnett	Emely Alejandro Huerta
Christopher Newell	Emily Albright
Cinthia Olson	Emily Baker-Stuckman
Columbia Sportswear Company	Emily Burris
Coral & David Strickland	Erica Larsen
Damon Jones	Erik Holte
Dan Williams	Erik Johnson
David Adams	Erin Acker
David Bennett	Erin Burkhart
David Harden	Esther Lerman Freeman
David Sahni	Ethan McGlone
Dawn Balcom	Ethan Milton
	Ezra Albright



Thank You!

On behalf of all of us at Ukandu, we are immensely grateful to the corporate, foundation, and individual donors who make our work possible.



Up to \$500 Cont.

Fred Meyer Community Rewards

Garrett Ryan

Gary &Carolyn Filsinger

Gerry Froese

Harold Goldstein

Heather Bacon-Shone

Heather Campbell

Heather Eberhardt

Heather Lacey

Heidi Bruno

Henry Vera

Hillary Marthaller

Holden Simoneau

Hollywood Lions Club

Ing Lim

Iris Tilley

Jackson Walsh

James Mast

Jamie Daigle

Jan Renfro

Jane Paynter

Janet Guggenheim

Janice Van Domelen

Jarell Hunt

Jason Scott

Jay Moskovitz

Jayson Newby

Jean Cripps

Jeanie Kistner

Jeff Branson

Jeff Hunt

Jen Erkenbeck

Jen Sanders

Jennifer McCullar

Jenny Mosher

Jeremy Bader

Jessica Heaton

Jessica Oetker

Jessica Skowrya

Jim Johnson

Jim Whittemore

Jocelyn Libby

Jodi Sackville

Jodi Shook

Joe Harmeyer

Joe Mooney

Johanna Thoresz

John Cockerham

John Newton Hickox

Johnna Loreen

Johnna Loreen

Jonathan Johnson

Jordan Culberson

Jordan Fogle

Thank You!

On behalf of all of us at Ukandu, we are immensely grateful to the corporate, foundation, and individual donors who make our work possible.

Up to \$500 Cont.

Fred Meyer Community Rewards

Garrett Ryan

Gary and Carolyne Filsinger

Gerry Froese

Harold Goldstein

Heather Bacon-Shone

Heather Campbell

Heather Eberhardt

Heather Lacey

Heidi & Rick Bruno

Henry Vera

Hillary Marthaller

Holden Simoneau

Hollywood Lions Club

Ing Lim

Iris Tilley

Jackson Walsh

James Mast

Jamie Daigle

Jan Renfro

Jane Paynter

Janet Guggenheim

Janice Van Domelen

Jarell Hunt

Jason Scott

Jay Moskovitz

Jayson Newby

Jean Cripps

Jeanie Kistner

Jeff Branson

Jeff Hunt

Jen Erkenbeck

Jen Sanders

Jennifer McCullar

Jenny Mosher

Jeremy Bader

Jessica Heaton

Jessica Oetker

Jessica Skowyra

Jim Johnson

Jim Whittemore

Jocelyn Libby

Jodi Sackville

Jodi Shook

Joe Harmeyer

Joe Mooney

Johanna Thoresz

John Cockerham

John Newton Hickox

Johnna Loreen

Johnna Loreen

Jonathan Johnson

Jordan Culberson

Jordan Fogle



Thank You!

On behalf of all of us at Ukandu, we are immensely grateful to the corporate, foundation, and individual donors who make our work possible.



Up to \$500 Cont.

Jordan Herrle

Joseph Johnson

Josh Noda

Joshua & Angela Pangelinan

Joy to My Sole Reflexology

Judith Ann Brenes

Judith McMahon

Judy Fitch

Julie McVey

Julie Samples

Justin Berry

Justine Hanrahan

Kameko Musolf

Karen Betschart

Karen Fale

Kate Moore

Kathy Semmes

Kathy Wall

Katie Allender

Katie Grant

Kaycee Richarz

Keely Rogers

Keith Sconiers

Kelsey Mulverhill

Kendall Call

Kendall Dunn

Kevin Kukar

Kevin Wooldridge

Kim Braun

Krista Fobert

Kristen Eberlin

Kristie Young

Kristina Nicole

Kristine Morrison

Kroger

KyAnn Lewis

Kyle Strickland

Larry Schuetz

Laura Belson

Laura Macpherson

Laura Mangum-Childers

Laura Ward Collins

Laurie Cuffe Kelley

Libby Schwartz

Lily Doebler

Linda DeHackbeil

Linda O'Keefe Hering

Linda Scher

Lisa Achim

Lisa Farjado Faust

Lynn Kelly

Lynne Chapman

Lynne Gary

MacGregor Hall

Thank You!

On behalf of all of us at Ukandu, we are immensely grateful to the corporate, foundation, and individual donors who make our work possible.

Up to \$500 Cont.

Maggi Gyuricska
Maggie Oberhofer
Malorie Morrison
Manu Moritz
Marc Monaghan
Margaret Coe Clarke
Margaret Dodds
Margaret Eichler
Margot Swanson
Marguerite Ballard
Maria Teresa Kassing
Marisa White
Mark & Tammy Lovely
Mark Duin
Mark Ilyin
Mark Ohman
Mark Strom
Martha & Graeme Leggatt
Martina Parrone
Martine Sacks
Mary & James Frinell
Mary Eastman
Mary Waskerwitz Freyer
Maryl Carow
Matt Garcia
Matteo Gouveia
Matthew Capurro

Matthew Cooksey
Maura Bourg
Maurice Reid
Meeghan Rust
Megan Greisen
Megan Jones
Meghan Duncan
Melissa Jankovich
Melissa Karki
Michael Agee
Michael Field
Michael Maloney
Michael Nelson
Michal Haller
Michele Howser
Michelle Fritts
Microsoft (Employee Match)
Mike Goodell
Mike & Monica Loomis
Mike Lovely
Milo Winningham
Miriam Agisim
Moda Health (Employee Match)
Molly Jones
Morgan MacArthur
Nancy & Gawain Gilkey
Nancy Bock
Nancy Frisch



Thank You!

On behalf of all of us at Ukandu, we are immensely grateful to the corporate, foundation, and individual donors who make our work possible.

Up to \$500 Cont.

Nicholas Cook

Nicole Brown

Nicole Fowler

Norma and Lee Barney

NXT Level Fitness

Oonagh Morgan

Oregon City Brewing Co.

Pamela Evans

Pechluck Laskey

Peg Lauer

Portland Bentham Lions Club

Rachel Brandt

Ramey Miller

Rebecca Frinell

Rebecca Mendez

Rebecca Robinson

Reky S Martha Groendal

Rhonda Gardenheir

Ritu Sahni

Robyn El Kay

Ronan Good

Ruth E Vandercook

Sachi Barrong

Sally Novitsky

Sam Brier

Samantha Pottenger

Sarah Caughey

Sarah Crooks

Sarah Knudsen

Sarah York

Scott Anderson

Scott Phillips

Sean Kraljev

Sean McMahon

Shane Lopez Johnston

Shannon Boxx

Shannon Campbell

Sharon Burns

Shawna Pearson

Sheila Hoffman

Sheryl Horwitz

Sierra Archer-Masters

Simon Mulverhill

Spencer Kay

Stephanie Fox

Stephanie Valverde

Steven Cerri

Sue Stark

Summer Musa

Summer Sims

Susan Bladholm

Susan Torch

Susie and Larry Stuckman

Suzanne Setterholm



Thank You!

On behalf of all of us at Ukandu, we are immensely grateful to the corporate, foundation, and individual donors who make our work possible.

Up to \$500 Cont.

Suzie Payne
Sven Wood
Sydney Panacek
Tal Munson
Tara Bernhardt
Tekela Fisher
Teresa Osborne
Theavy Chhor
Thomas Russell
Tiah Kever
Tiffany Cox
Tillamook (Employee Matches)
Tim Connelly
Tim Lewis
Timothy Matthews
Todd Semmes
Tom Bird
Tracy Woods
Trudi Morrison
Tyler Reeves
Tyson Theese
Umpqua Bank (Employee Matches)
Vanessa Valencia
Vicki Sands
Vickie Maletteri
Wally Lito
Whitney Williams

William Hathaway
Willy Smith
Zach Eimon

In Kind

Por Que No
Willamette Valley Vineyards
One Level Brewing
Red Sauce Pizza
Kau Kau
Lux Sucre
Slappy Cakes
Kona Ice
Hopscotch
Olive and Shea
Portland Leather
Wonderwood
Alloro Vineyard
Arabilis Wines
Arlyn Vineyard
Aticus Hotel
Atlas Management
Barry's Portland
BeGOAT
Bethel Heights Vineyard
Bipartisan Cafe
Bjornson Vineyard



Thank You!

On behalf of all of us at Ukandu, we are immensely grateful to the corporate, foundation, and individual donors who make our work possible.



In Kind Cont.

Breakside Brewery
Chocolat-e
Flaneur Wines
Kelley Fox Wines
Lingua Franca Winery
Olive & Shea
Oregon City Brewing
Oregon Wine Guides
Patricia Green Cellars
Personal Beast Pet Supply
ROCO Winery
Threshold Brewing & Blending
Timbers/Thorns
Violin Wines
A-WOL Dance Collective



Staff

Jason Hickox
CEO

Robin Emerick
Program Director

Johnna Loreen
Development Director

Sage Palmer
Communications Director

Joanna Miu
Program Coordinator

Kendall Dunn
Operations Manager

Board of Directors

Mark McGraw
Rebecca Frinell
Cecil Swamidoss

Chris Schwab
Chris Renfro
Iraida Hermann

Marcie Walsh
Rob Grassmyer
Luis Cardenas

Lisa Kolve
Margot Swanson
Brandon Rochon